

CERTIFICATE OF LOCATION OF GOVERNMENT CORNER

EAST QUARTER Corner of Section 15, Township 106, Range 39, 5TH P.M.

STATE OF MINNESOTA, County of MURRAY

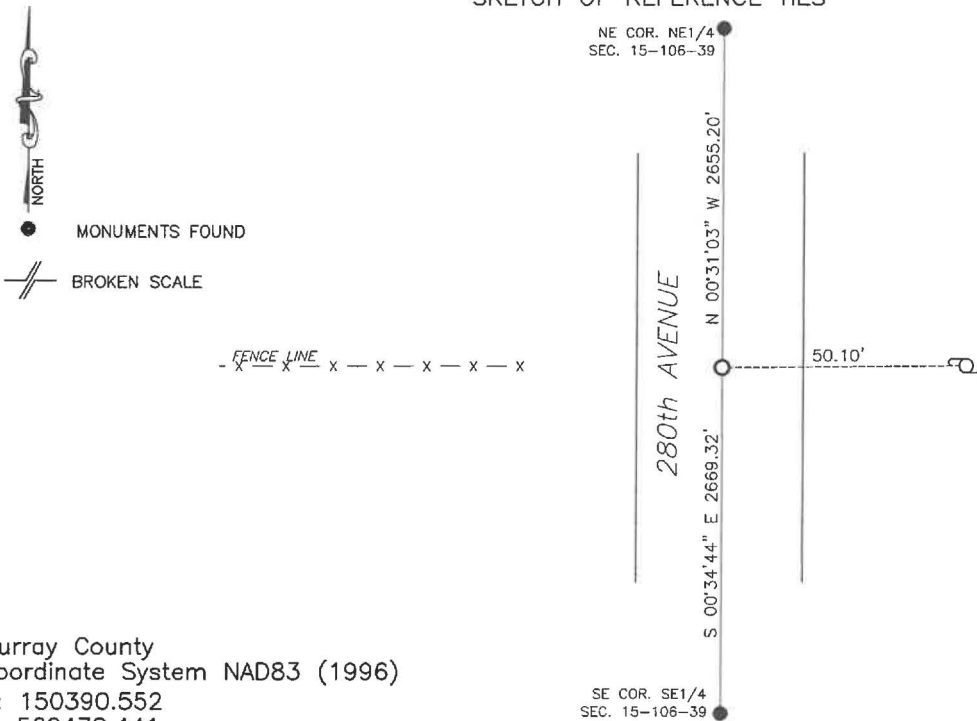
At the corner location shown on the sketch:

☒ On 8/13/2024 found a 5/8" iron with unreadable cap, removed and dug beneath
DATE for stone and found nothing.

☐ left monument as found, ☐ lowered monument, ☒ removed monument (explain)

☒ On 1/29/2025 placed a 5/8" iron with seal #43844 in the position of the found iron.
DATE

SKETCH OF REFERENCE TIES



Murray County
Coordinate System NAD83 (1996)
N: 150390.552
E: 569472.441

WGS84
LAT: 43°59'09.5001"
LON: -95°30'09.8557"

Statement of evidence relative to this corner location is on back of page.

I hereby certify that this document and the data contained herein was prepared by me or under my direct supervision.

Daniel L. Bueltel
License No. 43844

3/12/2025
DATE

MAR 13 2025

MURRAY COUNTY RECORDER

Statement of Evidence

EAST QUARTER CORNER SECTION 15, T106N. R39W OF THE 5TH P.M.

In September 1858 W.J. Neely surveyed the east township line.

In July of 1861 J.W. Myers surveyed the north, south, and west township lines.

In August of 1861 Wellman & Smoot subdivided the township.

A survey by J.W. Woolstencroft dated May 10, 1914 notes he found the old government stake.

A survey dated February 5, 1934 notes a concrete monument set at the corner.

County records from 1967 note a concrete monument found at the corner and steel pin placed above the monument.

On April 15, 2004 Perry Zieske, L.S. #23008, notes he found a 12" stone and placed a 1" iron pipe over top of the stone.

County records from May 17, 2012 show a $\frac{3}{4}$ " steel pin down 3".

On August 13, 2024 Bueltel-Moseng Land Surveying found an iron with an unreadable cap, removed and dug beneath it with a backhoe for the stone and found nothing.

Returned on January 29, 2025 and placed a $\frac{5}{8}$ " iron with seal #43844 in the position of the iron with an unreadable cap.